

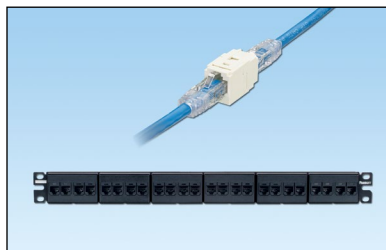
Mini-Com® TX6A™ 10Gig™ UTP Coupler Module and Patch Panel

PANDUIT®

SPECIFICATION SHEET

specifications

Category 6A/Class E_A, 8-position, female to female, UTP coupler module shall provide easy plug and play pass through connectivity. Coupler module shall act as one connecting hardware component in the channel. Coupler modules shall be available individually or installed in a 24-port flat patch panel. Couplers shall be compatible with 6 or 8-position RJ45 UTP patch cords with T568A and T568B wiring schemes.



**Mini-Com® TX6A™ UTP
Copper Modules**

Coupler Module: CC6X88‡

**Mini-Com® TX6A™ 10Gig® UTP
Coupler Patch Panel**

24-port, 1 RU: CP246X88BL

Accessories

Clear dust cap: MDC-C
Blockout device: PSL-DCJB-^^^
Phone icons: CIPIW-C++
Data icons: CIDIW-C++

technical information

Category 6A/Class E_A channel performance:	Exceeds channel requirements of ANSI/TIA-568.2-D Category 6A and ISO 11801 Class EA standards at swept frequencies 1 to 500 MHz One coupler can be used per channel while maintaining Category 6A/Class E _A performance
FCC and ANSI/TIA compliance:	Meets ANSI/TIA-1096-A; contacts plated with 50 microinches of gold for superior performance
IEC compliance:	Meets IEC 60603-7
PoE and PoH compliance:	Rated for 2500 cycles with IEEE 802.3af / 802.3at and 802.3bt type 3 and type 4. Supports Power over HDBaseT up to 100 watts
RoHS compliance:	Compliant
c(UL)us Listed:	UL 1863 (Use as communications circuit accessory), CSA standard C22.2

‡ For additional colors, add suffix: BL (Black), IW (Off White), BU (Blue), RD (Red), GR (Green), OR (Orange), IG (International Gray), or YL (Yellow).

^^^To designate color other than Red, add suffix BL (Black), BU (Blue), YL (Yellow), GR (Green), OR (Orange), IW (Off White) or IG (International Gray) at the end of the part number. 10/package.

++To designate color other than IW (Off White), replace IW with EI (Electric Ivory), IG (International Gray), BL (Black), BU (Blue), RD (Red), YL (Yellow), GR (Green), OR (Orange) or VL (Violet) in the part number. 100/package.

key features and benefits

100% performance tested	Confidence that each coupler will deliver the critical electrical performance requirements
Modular	Couplers snap in and out of all Mini-Com® Faceplates, Modular Patch Panels and industrial bulkheads for easy moves, adds and changes
RJ45 interface	Industry standard interface provides a quick and easy plug and play connection to RJ45 patch cords; backwards compatible
Identification	Can be clearly identified with optional labels and icons for port identification
Populated patch panel version	Factory installed 24-port patch panel mounts to standard EIA 19" or 23" racks for greater system flexibility
Block out device (optional)	Provides a simple and secure method to control access to data ports while not in use

applications

Mini-Com® TX6A™ 10Gig™ UTP Coupler Modules and Patch Panels are a component of the TX6A™ 10Gig™ UTP Copper Cabling System. This end-to-end system is interoperable and backwards compatible, providing design flexibility to protect network investments well into the future. Couplers are designed to perform as a single connector in the channel. One coupler can be used per channel while maintaining Category 6A/Class E_A performance. Couplers are a reliable, modular solution, ideal when setting up networks in a testing environment or during a planned system upgrade.

With certified performance to the ANSI/TIA-568-C.2 Category 6A and ISO 11801 Class E_A standards, this system will support the following applications:

- Ethernet 10BASE-T, 100BASE-T (FastEthernet), 1000BASE-T (Gigabit Ethernet)
- 155 Mb/s ATM, 622 Mb/s ATM, 1.2 Gb/s ATM
- Token Ring 4/16
- Digital video and broadband/baseband analog video
- Voice over Internet Protocol (VoIP)

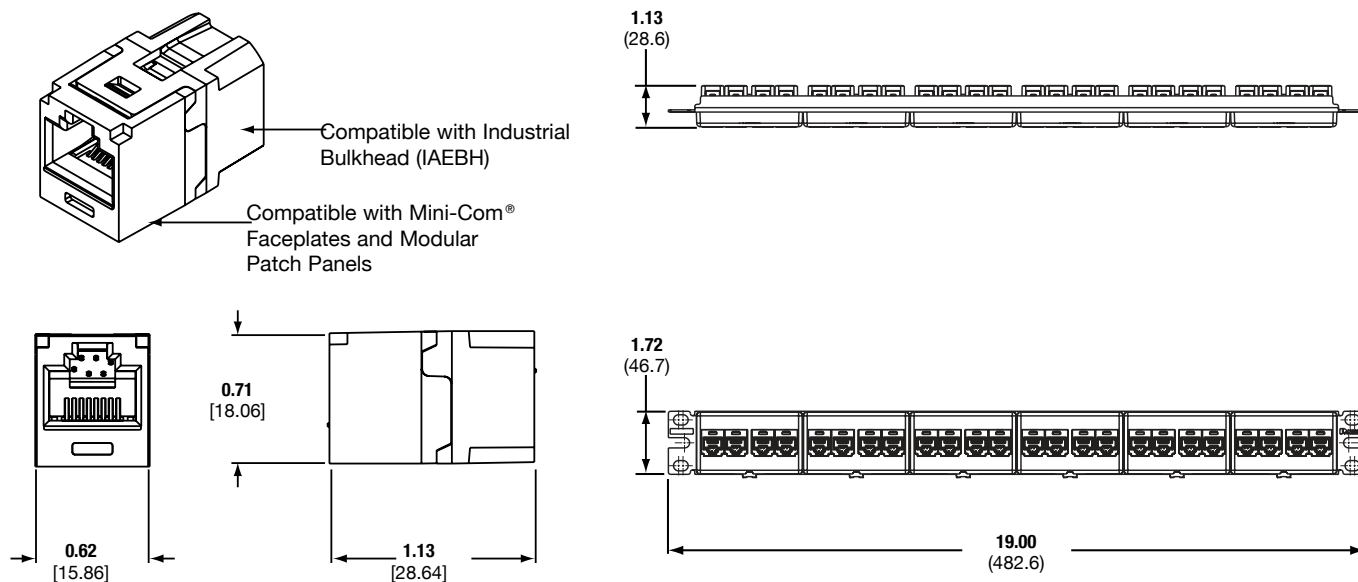
Mini-Com® TX6A™ 10Gig™ UTP Coupler Module and Patch Panel

Test Results

Mechanical Test	Test Method	Measurement	Required Performance
<i>Normal Force</i>	—	Load (grams)	> 100
<i>Vibration</i>	IEC 512-6d	Circuit Resistance Change (mOhms)	< 40
<i>Shock</i>	IEC 512-6c	Contact Disturbance (microsecond)	< 5
<i>Durability</i>	IEC 512-9a	Circuit Resistance Change (mOhms)	< 40
<i>Mating/Unmating</i>	IEC 512-13b	Mating Force (N)	< 20
		Unmating Force (N)	< 20
<i>Termination Cycles</i>	IEC 352	Number of Cycles	>20
Mechanical Test	Test Method	Measurement	Required Performance
<i>Low Level Circuit Resistance</i>	IEC 512-2a	Resistance (mOhms)	< 20
<i>Dielectric Withstand Voltage</i>	IEC 512-4a	1000VAC, 1 minute	Passed
<i>Insulation Resistance</i>	IEC 512-3a	Resistance (MOhms)	> 500
Mechanical Test	Test Method	Measurement	Required Performance
<i>Temperature Life</i>	IEC 512-9b	Circuit Resistance Change (mOhms)	< 40
<i>Humidity</i>	IEC 512-11c	Circuit Resistance Change (mOhms)	< 40
<i>Thermal Shock</i>	IEC 512-11d	Circuit Resistance Change (mOhms)	< 40
<i>Climactic Sequence</i>	IEC 512-11a	Circuit Resistance Change (mOhms)	< 40
<i>Flowing Mixed Gas Corrosion</i>	IEC 512-11g	Circuit Resistance Change (mOhms)	< 40

Mini-Com® TX6A™ 10Gig™ UTP Coupler Module

Mini-Com® 24-Port Category 6A Coupler Patch Panel



Dimensions are in inches [Dimensions in brackets are metric]

WORLDWIDE SUBSIDIARIES AND SALES OFFICES

PANDUIT CANADA
Markham, Ontario
cs-cdn@panduit.com
Phone: 800.777.3300

PANDUIT EUROPE LTD.
London, UK
cs-emea@panduit.com
Phone: 44.20.8601.7200

PANDUIT SINGAPORE PTE. LTD.
Republic of Singapore
cs-ap@panduit.com
Phone: 65.6305.7575

PANDUIT JAPAN
Tokyo, Japan
cs-japan@panduit.com
Phone: 81.3.6863.6000

PANDUIT LATIN AMERICA
Guadalajara, Mexico
cs-la@panduit.com
Phone: 52.33.3777.6000

PANDUIT AUSTRALIA PTY. LTD.
Victoria, Australia
cs-aus@panduit.com
Phone: 61.3.9794.9020

For a copy of Panduit product warranties, log on to www.panduit.com/warranty

For more information

Visit us at www.panduit.com

Contact Customer Service by email: cs@panduit.com
or by phone: 800.777.3300

©2021 Panduit Corp.
ALL RIGHTS RESERVED.
COSP251--WW-ENG
9/2021